



*Pursuing excellence
Perfecting craftsmanship*

Manufacturer:

Shandong Orient CNC Machine Tool Manufacturing Co.,Ltd.

📍 Add: No.999 Hengyuan South Road, Tengzhou City, Shandong Province

☎ Tel: +86-139-5329-7575 (24h) +86-139-6977-9960 (24h)

✉ Email: info@orient-cnc.com

🌐 Web: www.orient-cnc.com



山东欧瑞特数控机床制造有限公司
Shandong Orient CNC Machine Tool Manufacturing Co.,Ltd.



A PARTNER FOR SUCCESS

Company Profile

Shandong Orient CNC Machine Tool Manufacturing Co., Ltd. is a high-tech enterprise specializing in the R&D and production of CNC machining centers.

Located in Shandong Province, a leading hub for advanced manufacturing in China, the company covers an area of 18,000 square meters, employs more than 220 staff, and produces over 1,000 sets of machining centers annually. It is equipped with dozens of sets of high-precision CNC processing equipment and key testing & calibration instruments.

In recent years, the company has established a CNC machine tool technology R&D base through cooperation with Shandong University, focusing on the development and manufacturing of high-end CNC machining centers.

Our main products include vertical machining centers, horizontal machining centers, double-column machining centers, and 5-axis machining centers. These products are widely applied in industries including industrial machinery, auto parts, new energy, semiconductors, medical equipment, and aerospace.

Renowned for stable performance and reliable quality, our products are exported to more than 70 countries and regions across Europe, the United States, the Middle East, Southeast Asia, and South America. With a strong focus on overseas markets, we also provide OEM services and structural components for many well-known international high-end enterprises.

We sincerely welcome customers and partners from all over the world to visit our factory, discuss cooperation, and join us in achieving common development and a win-win future!

Welcome to visit our factory!



Why choose us?

1. We specialize in the R&D, design and manufacturing of high-performance CNC machining centers.
2. We adhere to the principle of Quality First, Customer Foremost.
3. We optimize production efficiency and control costs to deliver machines with excellent cost performance.
4. We provide 24/7 technical support & after-sales service, including on-site installation, commissioning and training.
5. Our machines adopt world-famous brand key components, ensuring high precision, stability and long service life.
6. We offer customized solutions for automotive, new energy, aerospace, mold and other industries.

Our Philosophy

Quality first, Customer foremost, Pursuing excellence, Perfecting craftsmanship.

Our Vision

To become a world-renowned and trusted brand in high-end CNC machining centers, leading precision manufacturing with innovation and quality.

Our Mission

To provide customers with high-precision, high-stability and high-performance CNC machining centers, empower intelligent manufacturing, and create long-term value for customers, employees and society.



Main Machining Equipment:

At ORIENT CNC, exceptional product quality starts with world-class machining equipment.

As a core manufacturing phase, machining transforms raw materials into precise components through turning, milling, grinding, and other precision processes.

We uphold strict quality control from cast iron production onward, and integrate our proprietary CNC machining center manufacturing with international advanced technologies to achieve superior accuracy and efficiency.

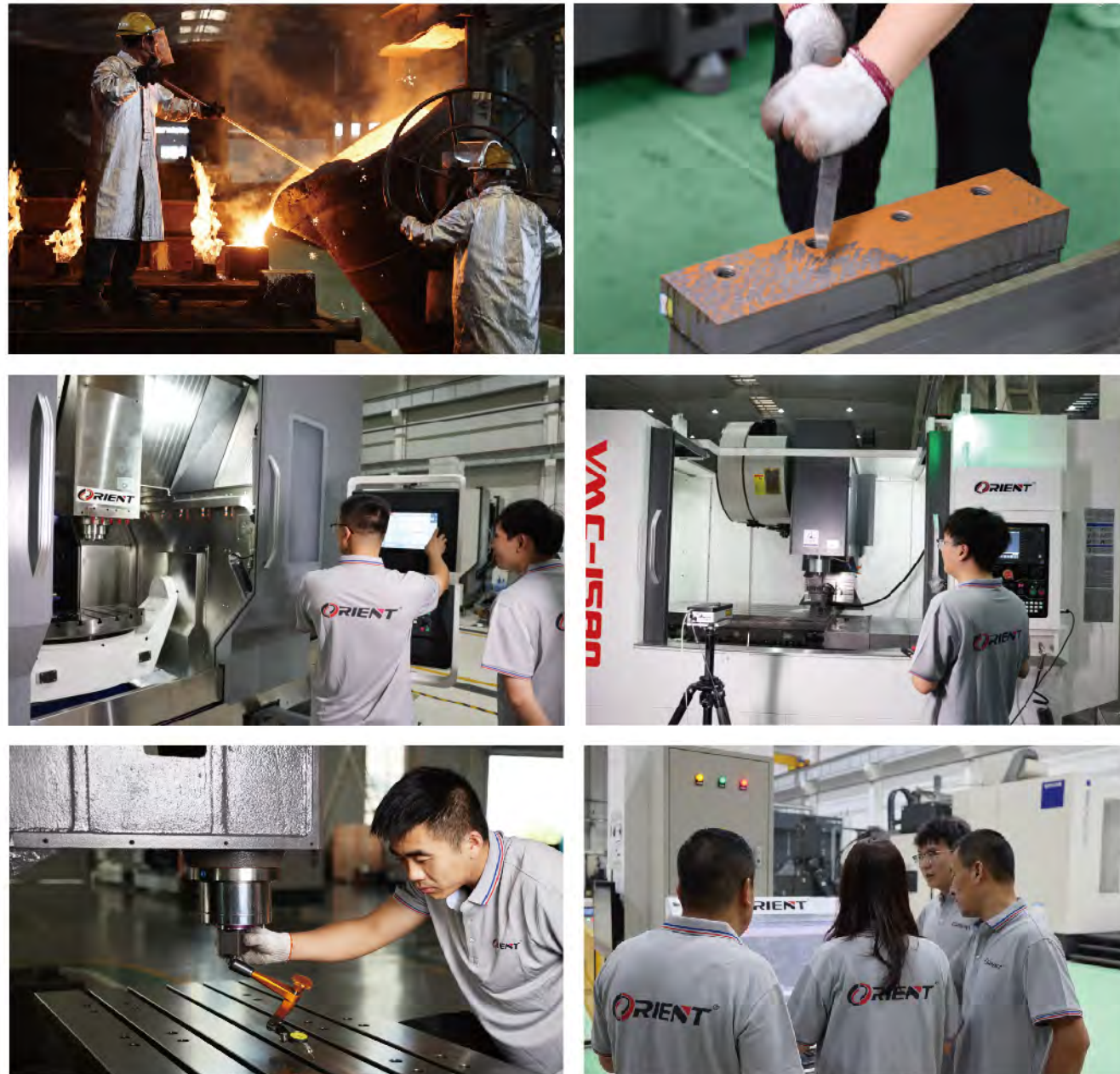
This integrated strategy ensures uncompromising precision and innovative solutions for every project.



Quality Control:

At ORIENT CNC, 20+ years of CNC machining center expertise means quality is built into every production stage. In the dynamic machine tool sector, high speed, precision, rigidity, and stability are essential - and quality is our cornerstone. We produce over 80% of components in-house to maintain full control over every critical part.

Our precision craftsmanship covers surface finishing (scraping and lapping), assembly, and final integration, with multi-stage checks using advanced metrology tools. Every machine undergoes a strict full inspection before delivery, ensuring accuracy, performance, safety, and reliability, while protecting our brand reputation and reducing after-sales costs for customers.



Service:

Lifetime Technical Support for ORIENT CNC Machining Centers

Ensure peak productivity and reliability throughout your machine's lifecycle with our comprehensive support programs.

Key Services Include:

1. Free factory-based training

Hands-on training sessions at our facility to maximize operator proficiency with CNC machining centers.

2. On-site installation & operator training

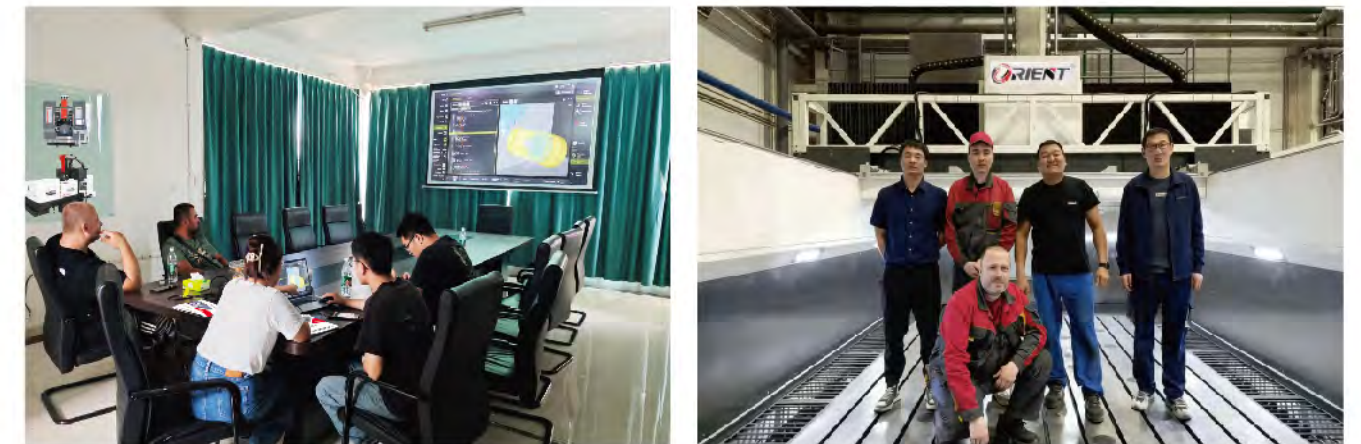
Factory-certified technicians provide full installation, commissioning and customized training at your plant.

3. 24/7 Remote support

Instant access to our expert online team via remote connectivity for real-time troubleshooting and technical guidance.

4. Spare parts supply & preventive maintenance

Timely delivery of original spare parts and scheduled preventive maintenance services to minimize downtime and extend machine service life.



CNC Vertical Machining Centers



CNC Vertical Machining Centers



VMC-440 Features:

1. 3-axis linear guideways.
2. Compact structure, complete functions, and small footprint.
3. High-strength castings for the base, column and table, with precision machining.
4. Drilling capacity: $\phi 14$ mm; Tapping capacity: M12; Milling capacity: $\phi 63$ mm.
5. Suitable for metalworking and training/educational use.

VMC-450/500 Features:

1. 3-axis linear guideways.
2. Adopts high-speed, high-precision spindle unit with pneumatic tool clamping.
3. Widened & reinforced bed, column, saddle, table and headstock with angle support plates, ensuring high structural rigidity and long-term accuracy.
4. 12T/16T ATC with accurate tool change and high reliability.

MODEL	UNIT	VMC-440	VMC-450	VMC-500
Table travel (X,Y,Z)	mm	420x300x460	450x320x420	500x320x420
Table size	mm	870x260	800x260	800x260
T-slots (No./width/distance)	mm	3-16-80	3-14-80	3-14-80
Max. load of table	kg	200	200	200
Rapid feed speed (X,Y,Z)	m/min	30/30/15	12/12/10	12/12/10
Spindle taper		BT30	BT40	BT40
Spindle speed	rpm	8000	8000 or 10000	8000 or 10000
Spindle motor power	kW	2.2/3.7	3.7	3.7
Tool magazine capacity	T	8	12	16
Positioning accuracy	mm	± 0.016	± 0.015	± 0.015
Re-positioning accuracy	mm	± 0.008	± 0.0075	± 0.0075
Overall dimensions	mm	1860x1520x2060	2250x1950x2200	2250x1950x2200
Weight	kg	1100	2400	2500

CNC Vertical Machining Centers

CNC Vertical Machining Centers



VMC-850

1. 3-axis linear guideways.
2. Compact structure, high rigidity, strong load capacity, long service life and excellent positioning accuracy.
3. Taiwan-made spindle unit with NSK/KOYO bearings; Z-axis equipped with enlarged brake motor.
4. Spindle speed options: 10000 rpm / 12000 rpm; Rapid traverse rates: X/Y/Z 36/36/30 m/min.
5. Machine appearance and sheet metal cover can be customized according to customer requirements.



MODEL	UNIT	VMC-650	VMC-750	VMC-850	VMC-855	VMC-866
Table travel (X,Y,Z)	mm	600x400x450	700x450x500	800x500x500	800x550x550	800x600x600
Table size	mm	800x320	900x400	1000x500	1000x550	1000x600
T-slots (No./width/distance)	mm	3-16-100	5-16-75	5-18-90	5-18-90	5-18-100
Max. load of table	kg	300	400	500	600	800
Rapid feed speed (X,Y,Z)	m/min	18/18/16	20/20/18	24/24/20	24/24/20	24/24/20
Spindle taper		BT40	BT40	BT40	BT40	BT40
Spindle speed	rpm	8000	8000	8000	8000	8000
Spindle motor power	kW	5.5	5.5	7.5	7.5	7.5/11
Tool magazine	T	16	16	24	24	24
Positioning accuracy	mm	±0.02	±0.01	±0.01	±0.01	±0.01
Re-positioning accuracy	mm	±0.01	±0.005	±0.003	±0.003	±0.003
Overall dimensions	mm	2200x1950x2400	2500x2200x2400	2750x2300x2300	2750x2300x2300	2750x2300x2300
Weight	kg	2800	3800	5200	5300	5400



CNC Vertical Machining Centers



- 1. High rigidity for heavy & precision cutting**
Rigid bed and column design for heavy cutting, low vibration, excellent roughing and fine surface finish.
- 2. Easy operation & quick learning**
Vertical structure for convenient setup, alignment and monitoring. Simple programming and maintenance.
- 3. Stable accuracy & high consistency**
High-precision linear guides, ball screws and bearings ensure stable dimension and low reject rate.
- 4. High automation, labor saving**
Automatic tool changer enables long-time unattended machining, reducing labor cost.
- 5. Multi-function, integrated processes**
One clamping completes milling, drilling, boring, reaming, tapping, chamfering, grooving and surfacing.
- 6. Wide applicability & high versatility**
Small footprint, cost-effective, ideal for molds, hardware, auto parts, 3C and automation components.
- 7. Flexible upgrade & good expandability**
Optional 4th axis, spindle oil chiller, chip conveyor, through-spindle coolant, probe, etc.
- 8. VMC-1570**
Compact structure designed for container shipment. 2 units fit into one 40'HQ container, saving ocean freight.

CNC Vertical Machining Centers



MODEL	UNIT	VMC-1160	VMC-1270	VMC-1370	VMC-1570
Table travel (X,Y,Z)	mm	1100x600x600	1200x750x600	1300x700x700	1500x700x700
Table size	mm	1200x600	1300x700	1400x700	1400x700
T-slots (No./width/distance)	mm	5-18-100	7-18-100	5-18-110	5-18-110
Max. load of table	kg	800	900	1200	1200
Rapid feed speed (X,Y,Z)	m/min	24/24/20	24/24/20	24/24/20	24/24/20
Spindle taper		BT40	BT40	BT40	BT40
Spindle speed	rpm	8000	8000	8000	8000
Spindle motor power	kW	11	11	11	11
Tool magazine	T	24	24	24	24
Positioning accuracy	mm	±0.008	±0.008	±0.008	±0.008
Re-positioning accuracy	mm	±0.003	±0.003	±0.003	±0.003
Overall dimensions	mm	3150x2300x2550	3350x2300x2550	3450x2300x2550	3650x2300x2550
Weight	kg	6200	6800	7500	7800

CNC Vertical Machining Centers



CNC Vertical Machining Centers



1. 3-axis linear guideways.
2. All main parts are made of Meehanite castings, stable structure and long-term consistent quality.
3. The wide base and triangular box-type column provide full support for heavy loads, with a solid structure that ensures excellent load-bearing capacity during processing.
4. The headstock is reinforced with ribs, and the optimal contact length ratio between the headstock and column provides stable support for the spindle.
5. The X, Y, and Z-axis servo motors are directly connected to the ball screws via precision couplings, eliminating connection gaps and improving transmission efficiency.
6. The spindle front end adopts a labyrinth design with a negative pressure air curtain protection function, which effectively prevents cutting fluid from entering the spindle and damaging the spindle bearings.

MODEL	UNIT	VMC-1580	VMC-1890	VMC-2100
Table travel (X,Y,Z)	mm	1500x800x700	1800x900x800	2000x1000x800
Table size	mm	1600x800	2000x900	2200x1000
T-slots (No./width/distance)	mm	7-22-110	5-22-165	7-22-120
Max. load of table	kg	1500	2000	2000
Rapid feed speed (X,Y,Z)	m/min	24/24/18	20/20/18	20/20/18
Spindle taper		BT40/BT50	BT50	BT50
Spindle speed	rpm	8000/6000	6000	6000
Spindle motor power	kW	11/15	15	15
Tool magazine	T	24	24	24
Positioning accuracy	mm	±0.01	±0.01	±0.01
Re-positioning accuracy	mm	±0.005	±0.005	±0.005
Overall dimensions	mm	4050x3070x3050	4950x3340x3200	5100x3550x3300
Weight	kg	12000	13000	13500

CNC Drilling Tapping Centers



DTC-750A

1. HT300 advanced resin sand castings are adopted, with internal stress eliminated through annealing and vibration aging treatments.
2. Integrated one-piece ultra-wide base provides more stable load-bearing support capability.
3. Widened herringbone column with an optimized joint surface span enhances the machine's rigidity.
4. Imported 3-axis linear guideways, ball screws, couplings and bearings are adopted, ensuring high precision and high efficiency.
5. Control systems available: Mitsubishi, Siemens, Fanuc, Syntec.
6. Spindle speed options: 12000rpm, 15000rpm and 24000rpm.
Optional configurations: 4th-axis or 5th-axis rotary table; 5-axis linkage cradle rotary table models are also available.



CNC Drilling Tapping Centers



The 4th axis rotary table



The 5th axis rotary table



5-axis linkage cradle rotary table model

MODEL	UNIT	DTC-540A	DTC-640A	DTC-750A	DTC-850A	DTC-1050A
Table travel (X,Y,Z)	mm	500x400x300	600x400x300	700x450x300	800x500x330	1000x500x330
Table size	mm	650x400	700x420	800x420	1000x500	1100x500
Table load	kg		250		350	
Distance from spindle to table	mm		150-450		150-480	
Distance from spindle to column	mm		464		546	
Rapid feed	m/min		36		48	
Spindle taper	mm		BT30/BT40		BT30/BT40	
Spindle speed	rpm		20000		20000	
Spindle motor	kW		5.5		5.5	
Tool magazine capacity	T		21 (opt.26)		21 (opt.26)	
Overall dimensions	mm	2300x1750x2500		2400x1880x2500	2480x2290x2295	2680x2290x2295
Weight	kg	3000	3300	3400	4000	4500

Horizontal Machining Centers (Inverted T)



HMC-800



Horizontal Machining Centers (Inverted T)

1. High precision, speed, rigidity and reliability. Powerful spindle, excellent chip removal, high machining efficiency.
2. Integral inverted T type box structure with optimized ribs, high static/dynamic rigidity and stable accuracy.
3. Single table standard; reciprocating dual pallet optional.
4. Table indexing: 1°. B axis: positioning 10 arcsec, repeatability 2 arcsec.
5. Two speed spindle reducer direct drive, high torque and efficiency.
6. Standard: 4 screw + 1 chain chip conveyors (optional), high efficiency chip removal.
7. Spindle speed 6000 rpm available on request.
8. Options: ZF gearbox, chip flushing, linear scales, coolant through spindle, oil cooler, water gun, tool setter, probe, oil mist collector.



MODEL	UNIT	HMC-630	HMC-800	HMC-1000	HMC-1200
Spindle taper		BT50	BT50	BT50	BT50
Spindle speeds	rpm	3000	3000	3000	3000
Spindle motor power	kW	15/18.5	15/18.5	22/26	22/26
Table size	mm	630x630	800x800	1000x1000	1200x1200
Table travel (X,Y,Z)	mm	1000x800x800	1250x1000x1000	1600x1200x1300	2000x1500x1300
T-slot (No./width/distance)	mm	5-18-125	5-22-160	7-22-125	7-22-160
Table load	kg	1200	2000	3000	5000
Distance from spindle center to table surface	mm	100-900	80-1080	50-1250	0-1500
Distance from spindle end face to table center	mm	150-950	150-1150	350-1650	350-1650
Rapid feed speed (X,Y,Z)	m/min	24	24	18	18
ATC system	T	24	30	32	32
Positioning accuracy	mm	0.010	0.010	0.015	0.02
Re-positioning accuracy	mm	0.005	0.006	0.01	0.01
Overall dimensions	mm	5800x3700x3170	6000x4000x3600	7160x4760x4100	7300x5050x4600
Weight	T	15	17	24	26

Horizontal Machining Centers (Positive T)



HMCT-500

1. Superior precision & dynamic performance

High speed, rigidity and reliability. Equipped with high-power spindle and efficient chip removal system for ultra-precision and high productivity.

2. Stable positive T-type structure

- One-piece box-type cast bed with optimized ribs. Table moves longitudinally, column transversely, delivering excellent static/dynamic rigidity and long-term accuracy stability.
- Three-point support, integral cast positive T-type bed. Stepped X-axis guide rails enhance resistance to spindle axial cutting force.

3. 1° Indexing table, flexible positioning

- HMCT-500/1000: B-axis positioning accuracy 10 arcsec, repeatability 2 arcsec
- HMCT-630/800: B-axis positioning accuracy 8 arcsec, repeatability 2 arcsec

4. High-torque direct-drive spindle

Strong cutting performance, high efficiency and stable operation, ideal for heavy cutting and high-precision machining.

5. Efficient chip removal system

Optimized chip conveyor for fast, clean chip evacuation, ensuring uninterrupted production.

6. Flexible options

Automatic dual pallet changer, ZF gearbox, chip flushing unit, linear scales, coolant through spindle (CTS), oil cooler, water gun, tool setter, probe system, oil mist collector, etc.

Horizontal Machining Centers (Positive T)



MODEL	UNIT	HMCT-500	HMCT-630	HMCT-800	HMCT-1000
Spindle taper		BT50	BT50	BT50	BT50
Spindle speeds	rpm	4000	4000	4000	4000
Spindle motor power	kW	15/18.5	22/26	22/26	22/26
Table size	mm	500x500	630x630	800x800	1000x1000
Table travel (X,Y,Z)	mm	800x650x800	1000x900x950	1300x1100x1200	1700x1350x1500
T-slot (No./width/distance)	mm	5-14-100	5-18-125	5-22-160	7-22-125
Table load	kg	500	1200	2000	3000
Distance from spindle center to table surface	mm	100-750	50-950	50-1150	50-1400
Distance from spindle end face to table center	mm	150-950	150-1100	150-1350	250-1750
Rapid feed speed (X,Y,Z)	m/min	40	60	48	24
ATC system	T	24	45	45	40
Positioning accuracy	mm	0.010	0.008	0.008	0.015
Re-positioning accuracy	mm	0.005	0.004	0.004	0.01
Overall dimensions	mm	5600x5000x3100	6200x4900x3600	6700x5000x3800	7160x4760x4100
Weight	T	10	15	17	30

CNC High-speed Double-column Machining Centers

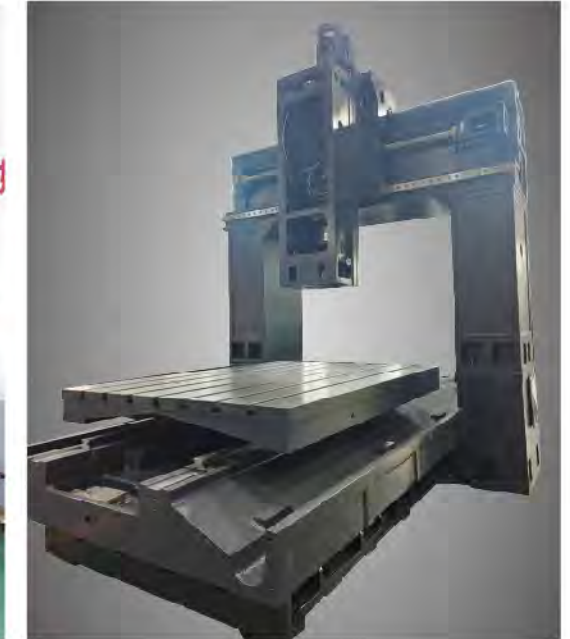


GMC-1310



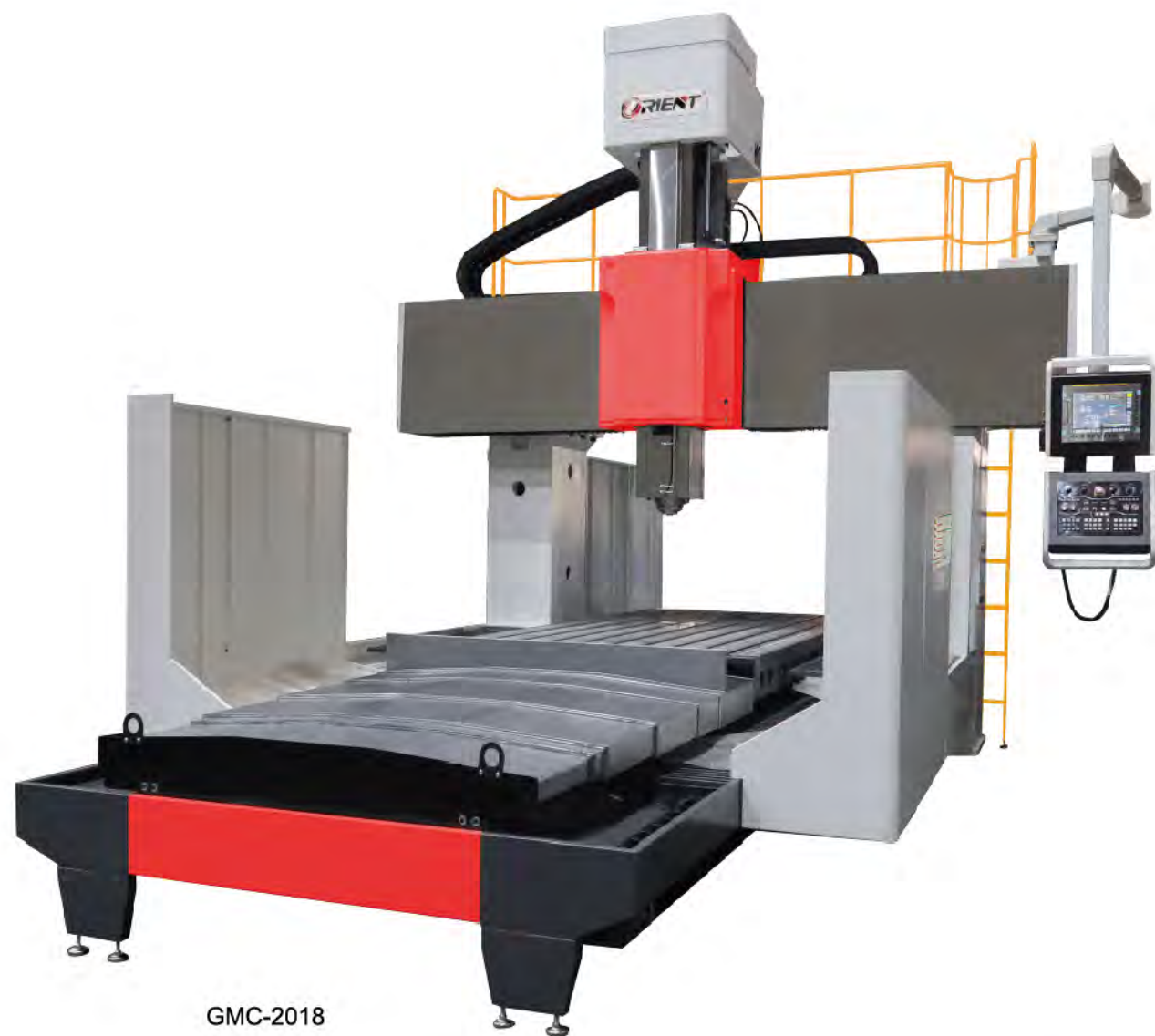
CNC High-speed Double-column Machining Centers

1. Key structural parts adopt 3D FEM optimized design, constructed from high-strength Meehanite cast iron, providing outstanding structural rigidity and long-term accuracy retention.
2. Featuring high speed and high cutting performance, ideal for high-efficiency machining of sheet metal parts, box-type components, mold cavities and precision parts.
3. Equipped with BBT40 ϕ 150 mm direct-drive long-nose spindle (12000 / 15000 rpm) to satisfy versatile machining demands; optional HSK-A63 ϕ 150 mm direct-drive spindle (15000 rpm) for high-speed, high-precision cutting applications.
4. X/Y/Z axes fitted with premium roller linear guideways from HIWIN, PMI or THK for enhanced stability and load capacity.
5. X/Y/Z axes employ P4-grade precision bearings and C3-grade precision ball screws from HIWIN or PMI, ensuring high positioning accuracy and smooth motion.
6. Optional: compatible with 5-axis cradle turntable for flexible configuration, realizing precise multi-face machining and high-quality complex contour processing.



MODEL	UNIT	GMC-1310	GMC-1714	GMC-2012	GMC-2016	
Spindle taper		BBT40/HSK-A63	BBT40/HSK-A63	BBT40/HSK-A63	BBT40	BT50
Spindle speed	rpm	12000/15000	12000/15000	12000/15000	12000	8000
Spindle motor	kW	7.5/11	7.5/11	7.5/11	7.5/11	15/18.5
Table travel (X,Y,Z)	mm	1300x1000x500	1700x1300x500	2000x1200x500	2100x1650x700	
Table size	mm	1300x900	1700x1000	2100x1000	2100x1400	
Table load	T	1.2	2	3	4	
Rapid feed (X,Y,Z)	m/min	15/18/18	20/20/20	20/20/20	10/15/15	
Distance of two columns	mm	1030	1200	1200	1650	
Distance from spindle to table	mm	150-650	180-680	180-680	130-830	
Tool magazine (ATC)	T	24	24	24	24	
Overall dimensions	mm	4060x3712x3350	4660x4308x5357	5250x2250x2700	5360x4065x3800	
Weight	T	8.8	9.8	10	16.5	

CNC Double-column Machining Centers



GMC-2018



CNC Double-column Machining Centers

1. Integral cast bed and bridge structure, providing a stable and rigid foundation.
2. GMC-2018/2518/3018: Standard belt-driven spindle (6000rpm), optional gearbox spindle (6000rpm). X and Y axes adopt linear guideways; Z axis adopts box way. The X axis is equipped with 2 guideways.
GMC-3228/4032: Standard gearbox spindle (6000rpm). X, Y and Z axes all adopt linear guideways. The X axis is equipped with 4 guideways.
The table and workpiece are fully supported, featuring high load capacity, stable precision and strong rigidity.
3. Left-right symmetrical double hydraulic cylinder counterweight ensures vertical balance, guaranteeing optimal long-term accuracy.
4. The joint surface of the spindle head and the motor base are finished by scraping to ensure optimal performance and precision.
5. Rich optional configurations: Column height increased by 200/300 mm; X-axis magnetic scale, Y-axis FAGOR linear scale, Z-axis FAGOR linear scale; RENISHAW TS27R tool setting probe; RENISHAW OMP60 optical probe.
6. Standard with semi-protective cover, full protective cover optional.



GMC-2518

MODEL	UNIT	GMC-2018	GMC-2518	GMC-3018	GMC-3228	GMC-4032
Spindle taper		BT50	BT50	BT50	BT50	BT50
Spindle speed	rpm	6000	6000	6000	6000	6000
Spindle motor	kW	15/18.5	15/18.5	15/18.5	15/18.5	22/26
Table travel (X,Y,Z)	mm	2000x1800x800	2500x1800x800	3000x1800x800	3200x2800x1000	4000x3200x1000
Table size	mm	2000x1600	2500x1600	3000x1600	3000x2000	4000x2400
Table load	T	6	8	10	12	15
Rapid feed (X,Y,Z)	m/min	15/15/12	15/15/12	15/15/12	15/15/12	12/15/12
Distance of two columns	mm	1900	1900	1900	2300	2700
Distance from spindle to table	mm	200-1000	200-1000	200-1000	200-1200	200-1200
Tool magazine (ATC)	T	24/32	24/32	24/32	24/32	24/32/60
Overall dimensions	mm	6300x5000x4500	7500x5000x4500	8500x5000x4500	9500x6000x5200	11000x6600x5200
Weight	T	22	24	26	30	42

CNC Crossbeam-moving Gantry-type Machining Centers



GMC-4232



CNC Crossbeam-moving Gantry-type Machining Centers

1. Solid structure

- Beam-moving gantry structure with excellent rigidity, shock absorption and dynamic performance.
- Main components optimized via 3D FEM, made of high-quality Meehanite cast iron.
- Bridge-type gantry layout, floor space only 56% of traditional table-top models.

2. Superior precision

- Dual-drive X-axis with full closed-loop control; heavy-duty linear rolling guides (X,Y axes) for ultimate precision.
- Fixed table design doubles load capacity, unaffected by workpiece quality.
- Z-axis square ram with 8-sided contact hard rail; beam features "linear-hard" combination design.

3. Powerful performance

- Two-stage gear drive with oil cooler for high torque and heavy-duty cutting.
- Symmetrical balance cylinders on both sides of the ram ensure fast Z-axis response.

4. Flexible options

- High-speed spindles: 6000/12500/20000rpm for high-precision mold machining.
- Custom upgrades: 5-axis spindle head, 1500mm Z-axis travel, 300-500mm column height increase.

5. Applications

Ideal for automotive, aerospace, printing, packaging, textile, military and mold processing.



MODEL	UNIT	GMC-3223	GMC-3227	GMC-4232	GMC-5242	GMC-12242
Spindle taper		BT50	BT50	BT50	BT50	BT50
Spindle speed	rpm	3000	3000	3000	3000	3000
Spindle motor	kW	22/26	30/37	30/37	30/37	30/37
Table travel (X,Y,Z)	mm	3200x2200x1000	3200x2700x1250	4200x3200x1250	5200x4200x1250	12200x4200x1250
Table size	mm	3000x2000	3000x2500	4000x3000	5000x4000	12000x4000
Table load	T	30	38	60	100	240
Rapid feed (X,Y,Z)	m/min	15/15/10	12/12/8	10/10/8	10/10/8	10/10/8
Distance of two columns	mm	2800	3300	3800	4800	4800
Distance from spindle to table	mm	300-1300	300-1550	300-1550	400-1650	400-1650
Tool magazine (ATC)	T	16/24/32	16/24/32	16/24/32	16/24/32	16/24/32
Overall dimensions	mm	6350x5350x5500	6350x5850x6120	7550x6450x6120	8500x7800x6120	18800x7800x6120
Weight	T	48	52	62	80	142

5-Axis (4+1) CNC Machining Centers

5-Axis (4+1) CNC Machining Centers



5-VMC-500

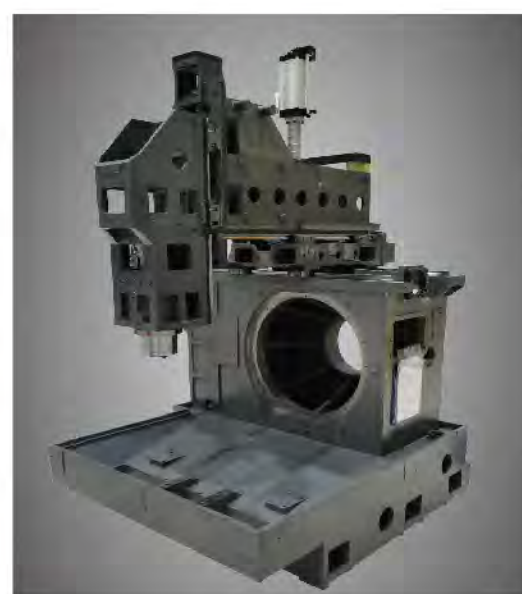
1. German design, manufactured in China under OEM.
2. Integral cast bed and column structure, rear scraper type chip conveyor.
3. Motorized spindle enables high-speed, high-precision and high-stability machining for complex parts with multi-directional processing.
4. Equipped with ORIENT self-developed single-arm supported rotary table unit.
5. CNC system:
Standard: SYNTEC 220MA-5, HNC 848D
Optional: SIEMENS 828D, FANUC 0i-MF 1
Optional: SIEMENS ONE, true 5-axis machining, not 4+1 axis.
6. Turning and grinding functions are optional.
7. 4+1 axis rotary table allows multi-side machining in one clamping, effectively improving productivity, ensuring accuracy and enhancing machining flexibility.



Turning



Grinding



Body

MODEL	UNIT	5-VMC-350(BC)	5-VMC-500(BC)	5-VMC-650(BC)	5-VMC-700(BC)
Spindle	Spindle taper	BBT40	BBT40	BBT40	BBT40
	Spindle speed	rpm	40-16000	40-16000	40-16000
	Motor power	kW	15/18	15/18	15/18
Working range	Table travel (X,Y,Z)	mm	450x350x350	550x450x400	600x520x475
	A axis tilting range		-120°/+120°	-30°/+120°	-30°/+120°
	C axis rotating range		360°	360°	360°
Rapid speed	X/Y/Z axis	m/min	36	36	42
	A/C axis	r/min	60/100	60/100	60/100
ATC	Tool magazine	T	16	24	24
A/C axis	Table size	mm	Φ350/Φ400	Φ500	Φ650x540
	Max. table load	kg	150	300	300
Accuracy	Positioning/Re-positioning (X,Y,Z)	mm	0.008/0.006	0.008/0.006	0.008/0.006
	Positioning/Re-positioning (A,C)	arc sec	10/4	10/4	10/4
Others	Overall dimensions	mm	4400x3131x2700	4400x3260x3000	4400x3600x3000
	Weight	kg	4500	6500	9500

5-Axis CNC Machining Centers (AC)



5-VMC-800

MODEL	UNIT	5-VMC-260	5-VMC-320	5-VMC-400	5-VMC-500	
Spindle	Spindle taper	BBT40	HSK-A63	HSK-A63	HSK-A63	
	Spindle speed	rpm	15000	18000	40-16000	40-18000
	Motor power	kW	7.5	15	15/18	22/33
Working range	Table travel (X,Y,Z)	mm	500x500x450	400x560x350	450x500x400	500x600x450
	A axis tilting range		±110°	-90°/+110°	±120°	±120°
	C axis rotating range		360°	360°	360°	360°
Rapid speed	X/Y/Z axis	m/min	24	36	36	36
	A/C axis	r/min	80/100	60/120	50/100	60/100
ATC	Tool magazine	T	24	16	24	32
A/C axis	Table size	mm	Φ260	Φ320	Φ400	Φ500
	Max. table load	kg	60	150	250	350
Accuracy	Positioning/Re-positioning (X,Y,Z)	mm	0.005/0.005	0.006/0.004	0.008/0.006	0.008/0.006
	Positioning/Re-positioning (A,C)	arc sec	10/5	10/4	8/4	8/4
Others	Overall dimensions	mm	2000x2400x2300	1200x1850x1900	3415x2180x2920	4136x2520x3250
	Weight	kg	3800	6500	8000	12000

5-Axis CNC Machining Centers (AC)

The machine features an integrated bridge-type gantry frame with a closed-loop bed-column design, delivering exceptional stability for high-precision machining.

1. Premium core configuration

Standard motorized spindle; direct-drive swivel rotary table with embedded structure for stable, precise positioning.

2. Full precision guarantee

Linear scales on linear axes, angle encoders on rotary axes. Standard contact tool setter and wireless probe for improved accuracy and efficiency.

3. Flexible CNC system

Siemens ONE standard; optional Heidenhain TNC640 / HNC 848D. Supports RTCP function for complex machining.

4. High-end model advantages

5-VMC-1000/1200 uses patented technology. Beam, saddle and ram adopt double-nested box-in-box structure. Y/Z axes with dual-screw synchronous drive for enhanced rigidity and precision.

5. Optional upgrades

X/Y linear axes available with linear motor drives, rapid traverse up to 48 m/min.

6. Strong machining capacity

Capable of 5-axis simultaneous machining of complex surfaces. Ideal for impellers, valve bodies, thin-walled parts, housings and frame components with high efficiency and flexibility.

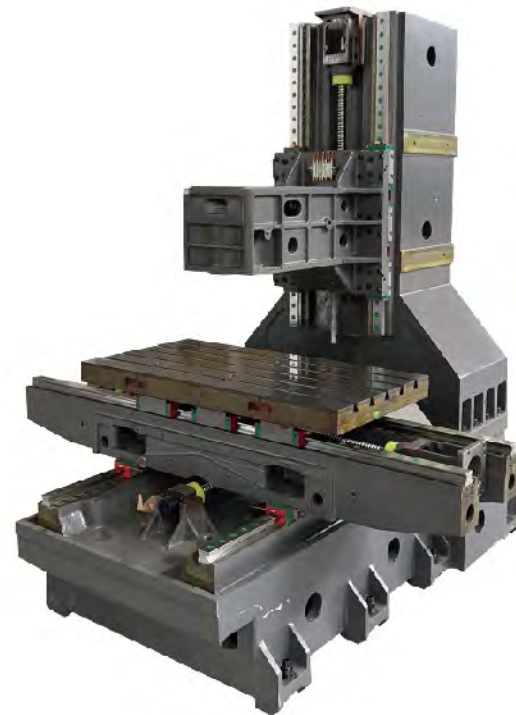


MODEL	UNIT	5-VMC-650	5-VMC-800	5-VMC-1000	5-VMC-1200	
Spindle	Spindle taper	HSK-A63	HSK-A63	HSK-A100	HSK-A100	
	Spindle speed	rpm	40-18000	40-15000	40-10000	40-10000
	Motor power	kW	22/33	22/33	22/33	22/33
Working range	Table travel (X,Y,Z)	mm	650x800x600	850x850x700	1000x1200x800	1100x1500x1000
	A axis tilting range		±120°	±120°	±120°	±120°
	C axis rotating range		360°	360°	360°	360°
Rapid speed	X/Y/Z axis	m/min	36	36	24	24
	A/C axis	r/min	60/90	60/90	30/60	30/60
ATC	Tool magazine	T	40	40	32	32
A/C axis	Table size	mm	Φ650	Φ800	Φ1000	Φ1200
	Max. table load	kg	800	1200	2000	2500
Accuracy	Positioning/Re-positioning (X,Y,Z)	mm	0.008/0.006	0.008/0.006	0.008/0.006	0.008/0.006
	Positioning/Re-positioning (A,C)	arc sec	8/4	8/4	8/4	8/4
Others	Overall dimensions	mm	4250x2780x3652	4774x2950x4176	6600x2750x5000	6710x3050x5230
	Weight	kg	15000	18000	25000	30000

CNC Vertical Machining Center Body



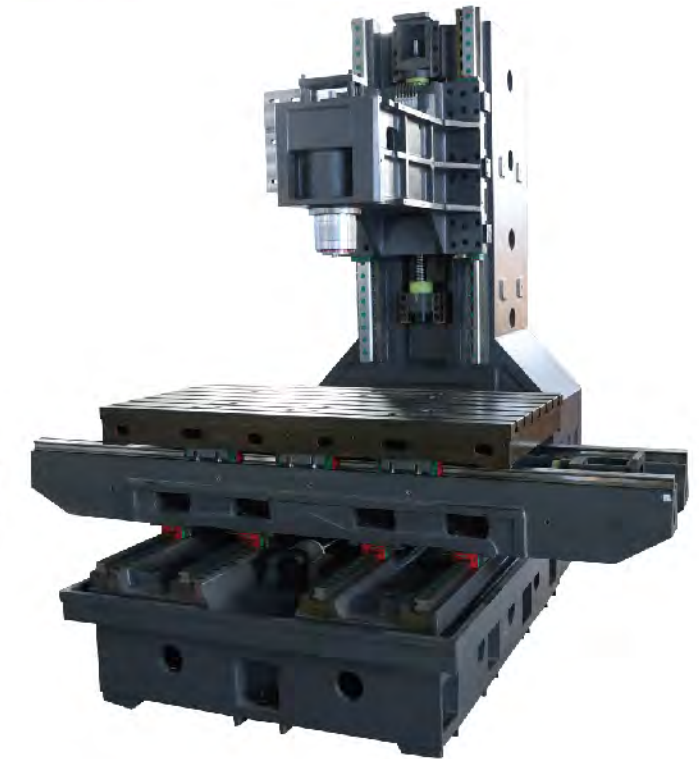
VMC-850-BODY



VMC-1160-BODY



VMC-1370-BODY



VMC-1580-BODY



1. Key structural parts (base, table, column) are made of Meehanite castings.
2. 3-axis linear guideways or X/Y-axis linear guideways + Z-axis box way. Guideways & ball screws: HIWIN, PMI, THK, REXROTH.
3. Imported P4 precision bearings for optimal power transmission.
4. Taiwan-made spindle unit, ATC, couplings and protective covers.
5. Forced lubrication system ensures reliable lubrication.
6. Suitable for heavy cutting, large molds and high-hardness workpieces. High rigidity, large contact surface, strong vibration resistance.
7. Fully enclosed sheet metal guard available on request.

MODEL	UNIT	VMC-850 / VMC-855 / VMC-866 -BODY	VMC-1160-BODY	VMC-1370-BODY	VMC-1580-BODY
Table travel (X,Y,Z)	mm	800x500x500 / 800x550x550 / 800x600x600	1100x600x600	1300x700x700	1500x800x700
Table size	mm	1000x500 / 1000x550 / 1000x600	1200x600	1400x700	1600x800
Spindle taper		BT40	BT40	BT40	BT50
Spindle speed	rpm	8000	8000	8000	6000
Weight	kg	2800 / 3000 / 3300	4100	5600	7800

Various Configuration Options



Disc type tool magazine



Chain type tool magazine



Linear scale



Vise for 5-axis machine



ZF/BF/GTP gear box



Direct-drive spindle



Belt-drive spindle



Gear-drive spindle



Motor spindle / Built-in motor spindle



Spindle through coolant



OMP60 optical machine probe



TS27R tool setting probe



HAMOO LAT90 laser tool setter

Various Configuration Options



Electrical cabinet air conditioner



Spindle oil chiller



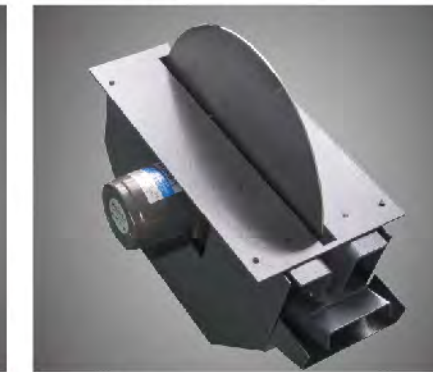
Oil mist collector



Rotating window



Chip conveyor



Oil-water separator



The 4th axis



3+2 axis



Various colors available



Angle head



Universal head



Extend head

Automatic 90° milling head